



ceiling mount

flt.maxx™ 5-slider

your lighting rep has recommended the

ceiling mount **flt.maxx™**

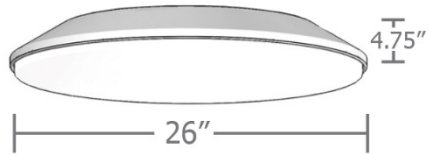
fixture for your project

Let's take a quick look:

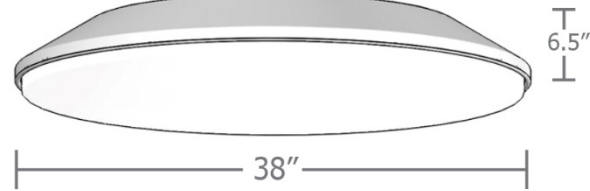


sizes and lumens

C7826



C7838



- C7826 (26") / 2340 – 7020 lm
- C7838 (36") / 4180 – 13370 lm

ceiling mount

flt.maxx™ 5-slider

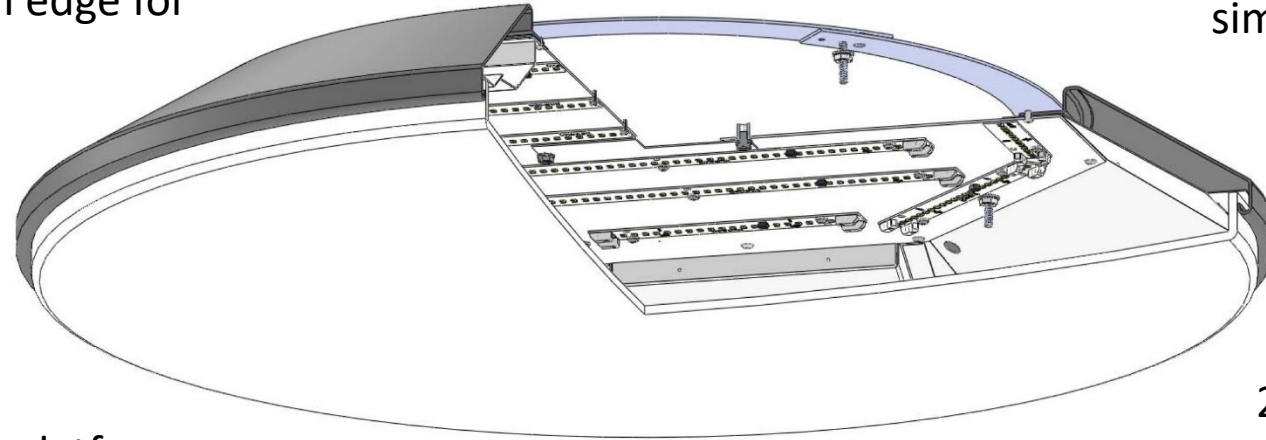


construction

integral programmable driver, constant current, field maintainable, universal input (120-277), 0-10v controllable to 1% dimming.

precision CNC spun .063" aluminum housing w/ rolled bottom edge for added strength

metal core LED boards mechanically held in place for simple field maintenance



.050" aluminum array optics platform painted in high reflectance (>92%) matte white powder coat

21 standard powder coat paint finishes + custom RAL colors

bottom diffuser made from virgin matte white acrylic, secured by allen key set screws recessed into trim ring

ceiling mount

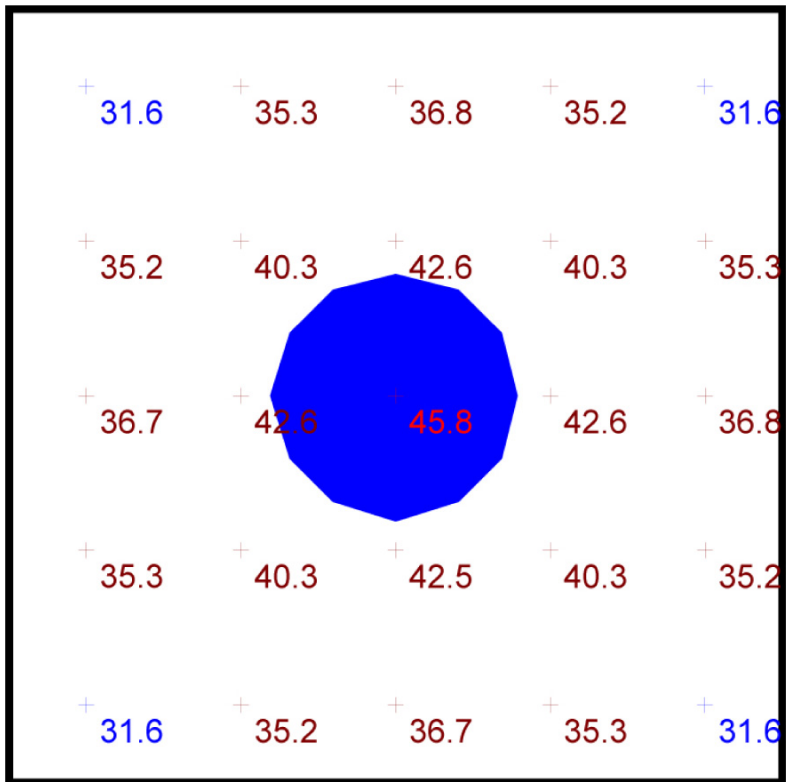
flt.maxx™ 5-slider



performance

Statistics

Description	Symbol	Avg	Max	Min	Max/Min	Avg/Min
ceil. ft.maxx	+	42.2 fc	48.8 fc	36.9 fc	1.3:1	1.1:1



Plan View
Scale - 1" = 2ft

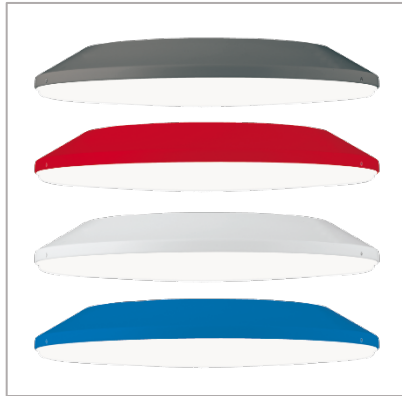


- 10' x 10' x 14'H space
- 80/50/20 reflectances
- bottom of fixture at 13.5' aff
- FC readings at 2.5' aff
- layout conducted using C7838 HI lumen package (13370 delivered lumens)

ceiling mount

flt.maxx™ 5-slider





Powder Coat Paint Finishes		
MW matte white	CP champagne	YG yellow 1018
TV textured white	BZ bronze	RD red 3320
AP anodized paint	BS brass	BU blue 5017
SS satin silver	GM gun metal	OR orange 2011
TG textured gray	BR brick red	MN mint 6019
FB flat black	BN brown 8023	GR green 6018
SB satin black	MB military blue	PL purple 4006



www.impactltg.com

- spec sheet and color chart
- photometric files and BIM models
- built to order in Saint Louis, MO, USA
- 4-week lead time

ceiling mount

flt.maxx™ 5-slider

